



11685 Main Street
 Williston, SC 29853
 www.dixienarco.com

M048.3 HVV CARD READER INSTALLATION

Revised 7/24/08

Models Affected: All HVV Model 501E and 600E Venders

Reason: To provide instructions on installing a card reader in the number 7 select button position of HVV machines.

Parts required per vender:

Part Number	Part Description	HVV Card Reader Kits Available		
		631,057,40x.x4 HVV Card Reader Kit Blue Kit Contents	631,151,70x.x4 HVV Card Reader Kit Green Kit Contents	631,151,80x.x4 HVV Card Reader Kit Black Kit Contents
631,057,30x.x3	Card Reader w/a Mounting Plate, Blue	1	0	0
631,151,50x.x3	Card Reader w/a Mounting Plate, Green	0	1	0
631,151,60x.x3	Card Reader w/a Mounting Plate, Black	0	0	1
631,050,73x.x3	Card Reader Support Plate	1	1	1
800,304,08x.x1	Carriage Bolt ¼-20x5/8	2	2	2
800,801,57x.x1	Hex nut ¼-20	2	2	2
800,801,54x.x1	Hex nut 11/32	4	4	4
802,001,22x.x1	Gasket	1	1	1
M048.x	Installation instructions	1	1	1

IMPORTANT: This kit will not work with all swipe style card readers.

Installation Instructions:

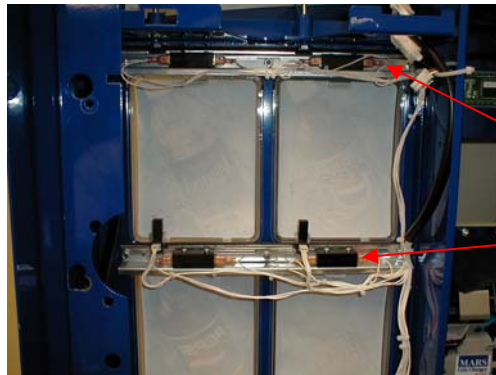
1. Unplug the vender.
2. Disconnect the harnesses to the Electronic Lock Assembly.
3. Remove the Electronic Lock Assembly by removing the two 7/16" bolts on the front and the three 7/16" hex nuts on the side of the Electronic Lock. See Figure 1.
4. Remove the switch button brackets above and below the #7 & #8 select buttons by removing the three 11/32" hex nuts that secure each bracket. Caution: Once the brackets are removed the select buttons will fall out of their openings. See Figure 2.
5. Remove select button #7. It will not be used when a Card Reader is installed.
6. Remove the #7 select switch from the top switch button bracket by removing the two #6-32 screws.
7. Unplug the switch and tape the wire connectors with electrical tape.
8. Remove the #7 sold out lamp from the sold out lamp holder if one is present.
9. Unplug the sold out lamp and tape the wire connector with electrical tape. It will not be used when a Card Reader is installed.
10. Install the Card Reader Weld Assembly Mounting Plate in the #7 select button panel position. Ensure the plate is flush with the select panel assembly front. See Figure 3.
11. Secure in position by installing the switch button brackets and 11/32" hex nuts removed in step 4.
12. Place Card Reader Support Plate in position. Using it as a template, mark two positions on the right side bulk head to drill 7/16" holes for securing. Note: There are several holes in the card reader support plate to choose from. Only two need to be selected. See Figure 4.

13. Remove Card Reader Support Plate. Drill the two 7/16" holes where marked being careful not to damage any wiring or peripheral devices with the drill or drill shavings.
14. Place Card Reader Support Plate in position and secure on the right side with two carriage bolts and hex nuts provided in the kit.
15. Place a Card Reader Gasket in the opening so it is between the back of the Card Reader Support Plate and the front of the Card Reader once installed. See Figure 5.
16. Place Card Reader in position. Secure with four 11/32" hex nuts. See Figure 6.
17. Connect all interface harnessing using Card Reader Manufacturers instructions.
18. Install Electronic Lock Assembly.
19. Secure in position by installing the two 7/16" bolts three 7/16" hex nuts removed in step 3.
20. Connect Electronic Lock Assembly harnesses disconnected in step 2.
21. Clean all drill shavings and debris from the vender and surrounding area.
22. Plug in vender.
23. Display will show DN501E-HV-12 or current model number saved in memory of SBC.
24. Press select button 1, display will change to "Set Model Number".
25. Press select button 1, display will show current model number saved in memory of SBC.
26. Press and hold select buttons 1 and 2 simultaneously to scroll through the set model numbers available until you see DN501E-HV-11C.
27. With DN501E-HV-11C showing on display, press select button 1 to save the new model number in memory of SBC.
28. Test vender for proper operation.



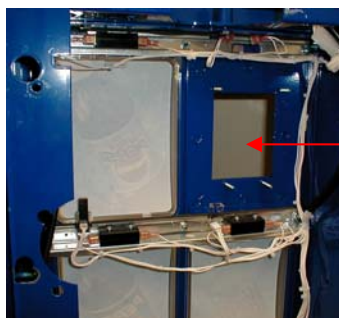
7/16" BOLT

Fig.1



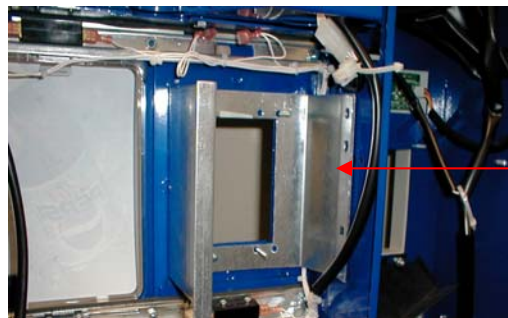
SWITCH BUTTON BRACKETS

Fig. 2



CARD READER WELD ASSEMBLY

Fig.3



Card Reader Support Plate

Fig.4

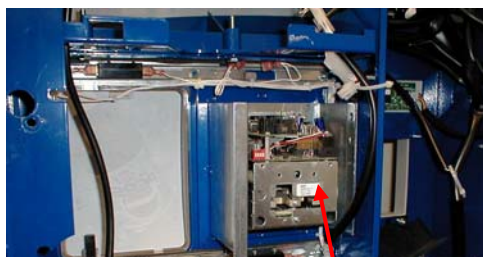


Fig.5



Fig.6